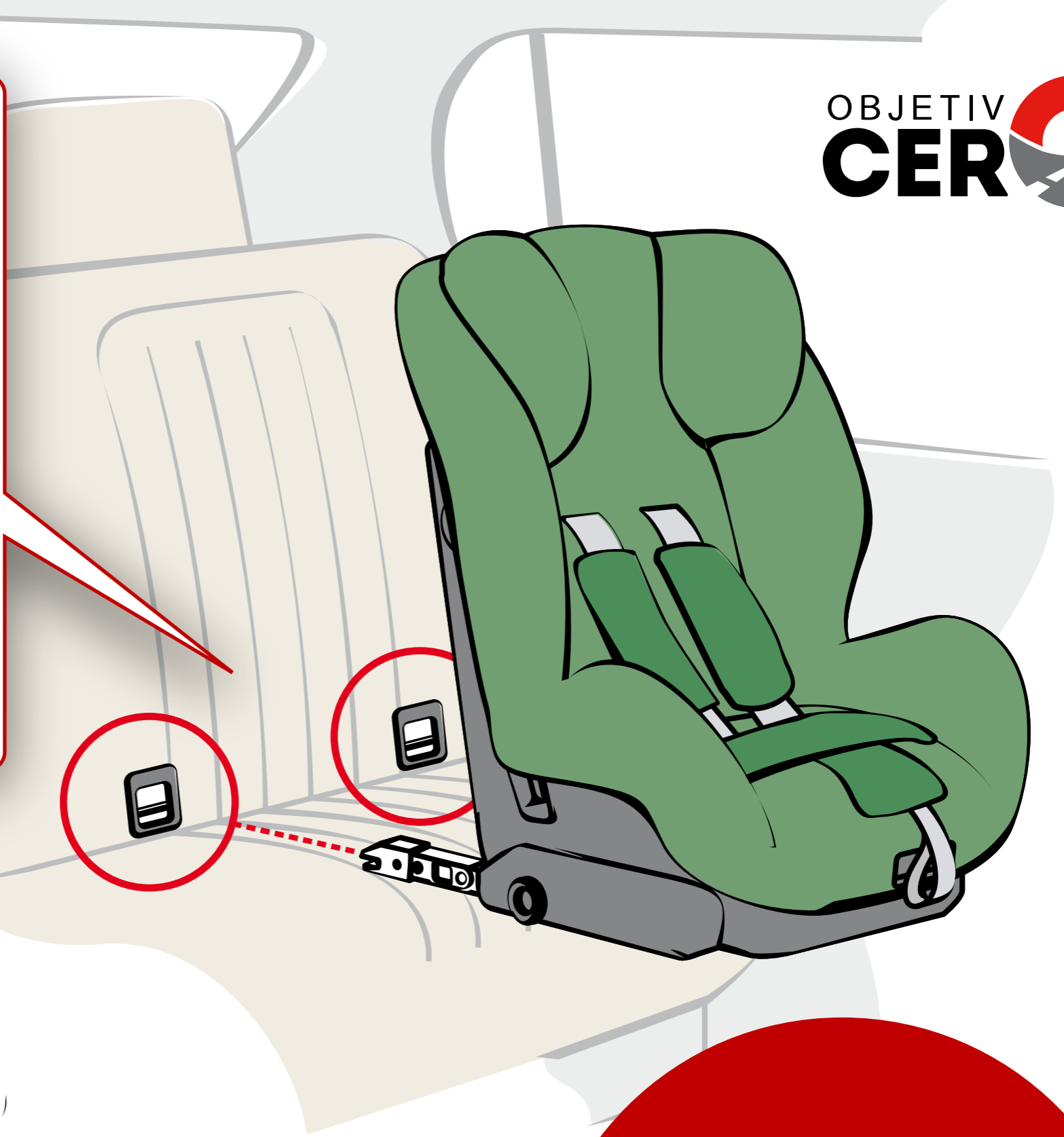


TYPES OF TOP TETHER



Seats with isofix anchors

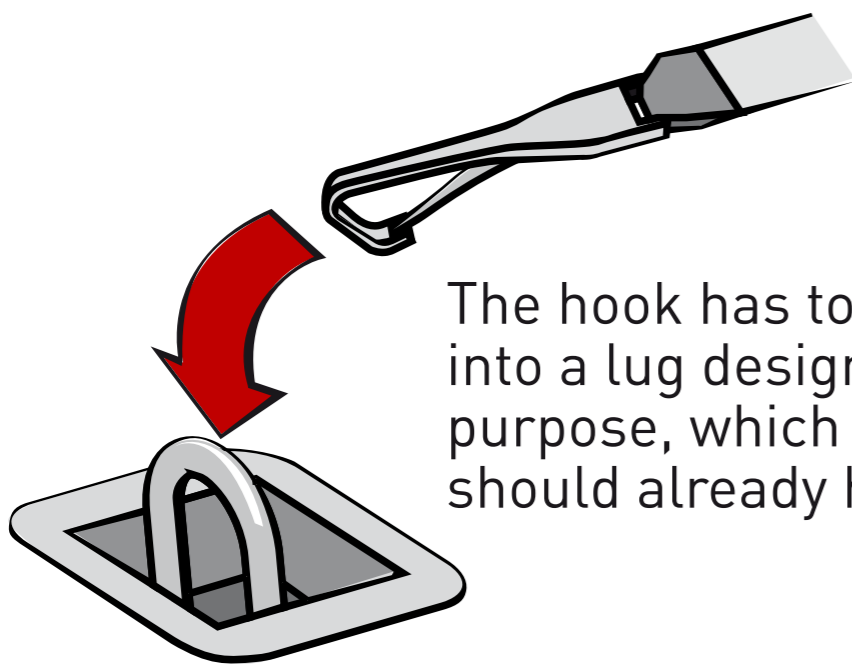
Child car seats with isofix anchors are fixed to the car seats by pushing the two anchors on the seat into the two lugs in the car seat and locking them, but this is not always enough.



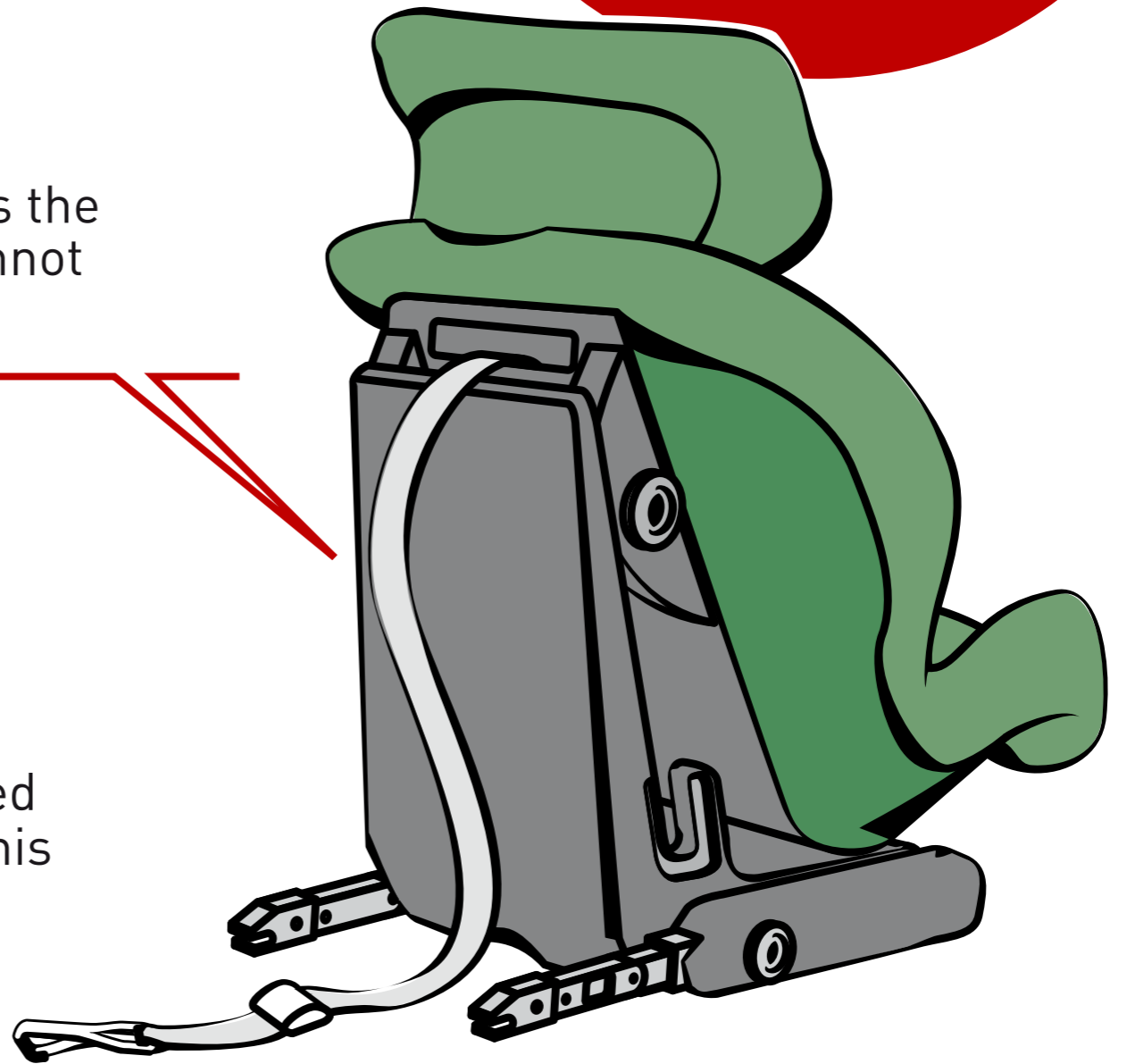
When decelerating very quickly, the seat can tip forward. To avoid this happening, a third anchoring point is required, which can be at the bottom, in the form of a leg, or it can be a "Top Tether"

The 'Top Tether'

Is a strap with snap hook, that fixes the upper part of the seat so that it cannot tip forward.



The hook has to be locked into a lug designed for this purpose, which the car should already have.



Depending on the model of car, there are four types

- 1 A hook in the roof of the car, just behind the seat on which the child seat is to be installed
- 2 A hook in the lid of the trunk, just behind the seat on which the car seat is to be installed
- 3 A hook in the floor of the trunk just behind the seat on which the car seat is to be installed
- 4 A hook in the backrest of the seat on which the car seat is to be installed

